



**Donnons  
au sang**  
*le pouvoir  
de soigner*

# ÉTABLISSEMENT FRANÇAIS DU SANG

## RESEARCH & TECHNOLOGY TRANSFER OFFICE

# EFS : WE ARE THE PUBLIC BLOOD SERVICE

*Under the supervision of the Ministry of Health and Prevention*

Established in 2000, EFS celebrated its 25th anniversary

## OUR MISSIONS

- **Caring** for more than 1 million patients every year: those requiring transfusion or transplantation, by providing the blood products, tissues and cells they need
- **Diagnose** diseases thanks to our expertise in medical biology and transplantation
- **Innovate** by capitalizing on our expertise in cells to develop cutting-edge medical procedures, treatments and scientific breakthrough
- **Train** healthcare professionals in France and around the world



## FOCUS ON : INNOVATION AT EFS

We have BIOLOGICAL RESOURCES that cannot be used for transfusion, but which are needed for scientific research



*Blood samples are essential for:*

- ✓ Fundamental research to improve the understanding of physiological and pathological mechanisms
- ✓ The development of new therapeutic strategies

We contribute to the fight against disease through SCIENTIFIC RESEARCH.



**19**  
research  
teams

- ✓ *A large proportion of transfused or transplanted patients suffer from chronic diseases, genetic disorders, or certain cancers. To help combat these diseases, our institution has gradually built an entire ecosystem dedicated to research and innovation and is a key player in scientific research.*

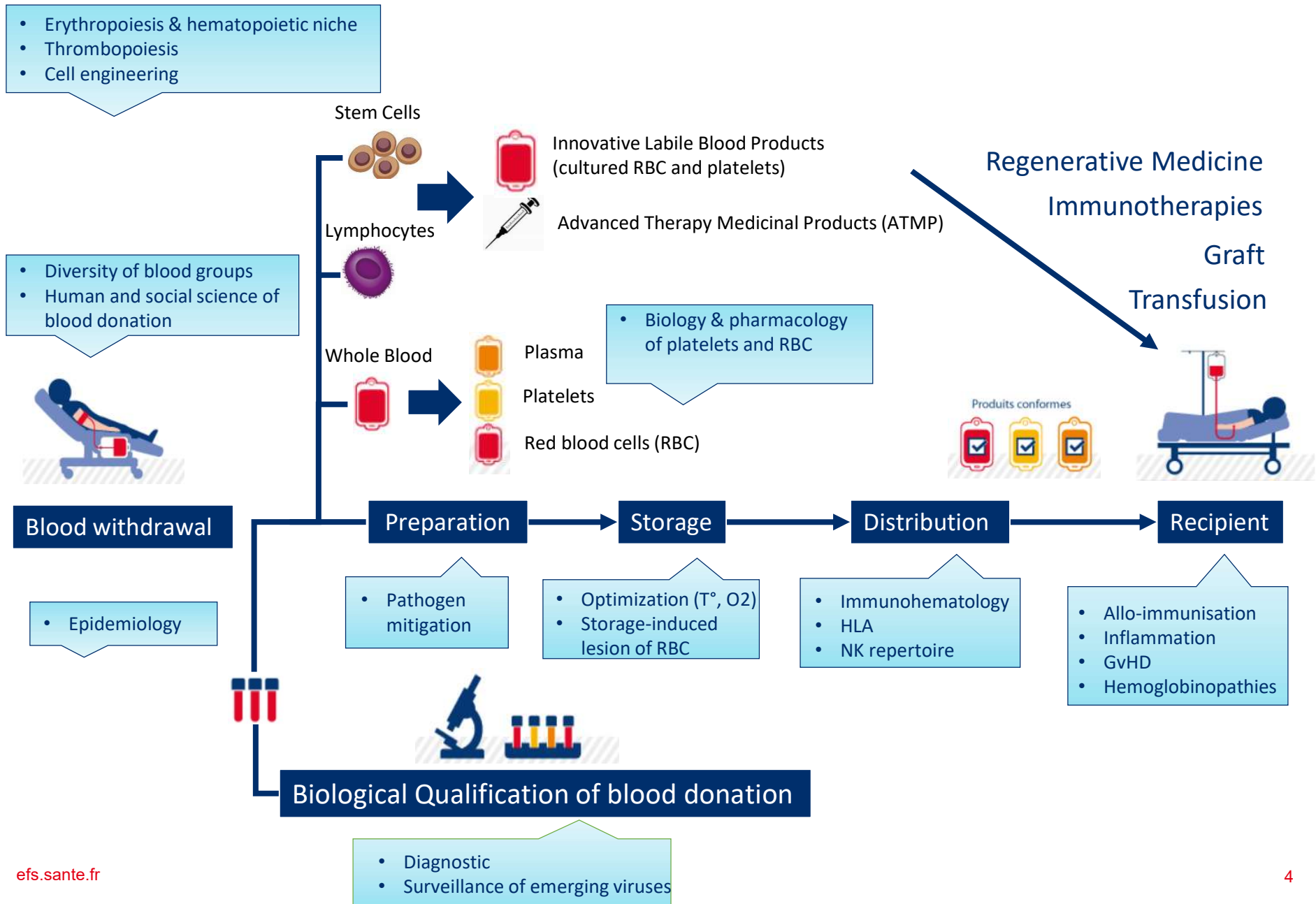
We are in a position to bring innovative therapies to life in our ATMP MANUFACTURING PLATFORMS.



**4**  
Pharmaceutical  
ATMP platforms

- ✓ *We produce drugs derived from cells, tissues or genes known as "**advanced therapy medicinal products**" for researchers and clinicians, with a view to clinical trials (phases 1 and 2).*

# RESEARCH AREAS ALONG THE BLOOD TRANSFUSION PATHWAY



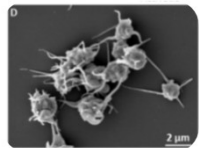
## TRANSFUSION & LABILE BLOOD PRODUCTS

### LBP & Transfusion Medicine



#### Red Blood Cells

*Sickle cells/ thalassemias  
Hemochromatosis  
Blood group genetics*



#### Platelets

*Hemostasis, thrombosis  
Inflammation*



#### Immunological Risks

*Alloimmunisation  
Transfusion-related acute  
lung injury*

### Infectious Risks & Diagnostic



*Diagnostic  
Prion  
Emerging pathogens*

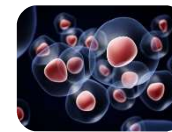
### Blood & Society



*Sociology of donation  
Donors health  
Biobanks  
Immunogenetics of  
populations*

## CELL & TISSUE ENGINEERING

### Hematopoietic Stem Cells Graft



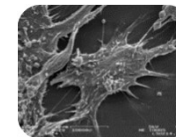
*Conservation/expansion  
HLA  
Immune Reconstitution  
Graft versus host*

### LBP of Tomorrow



*In vitro red blood cells  
In vitro platelets*

### Mesenchymal Stem Cells & Regenerative Medicine



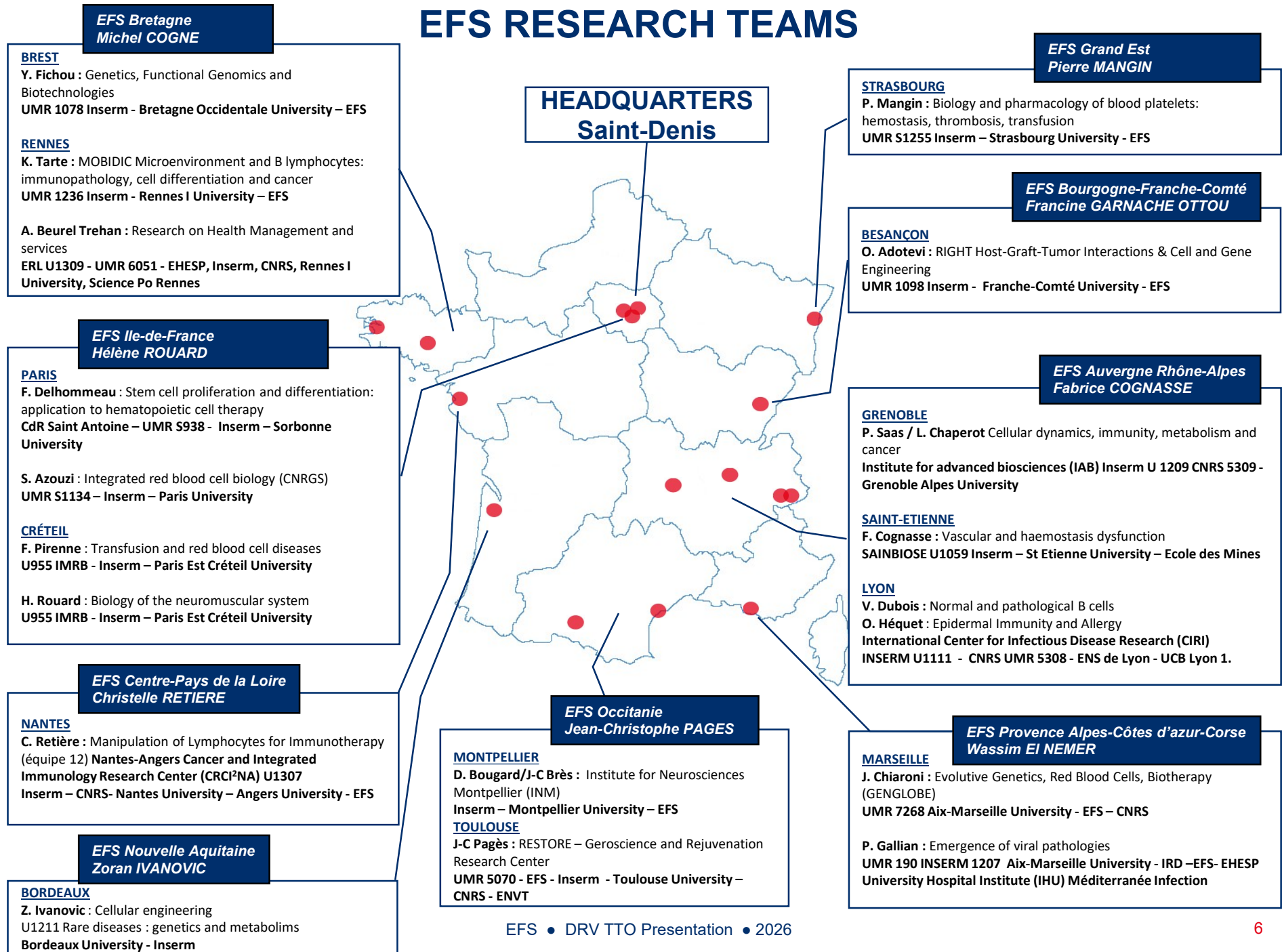
*Cellular engineering*

### Immunotherapies & Gene Therapy



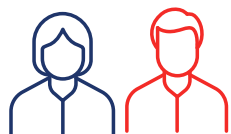
*Dendritic cells  
CAR-T cells  
TI Lymphocytes*

# EFS RESEARCH TEAMS



# EFS RESEARCH - FIGURES

As of 2026



**19**

Research  
teams



**124**

Full-time  
equivalent



**172**

Scientific  
publications



**15,6**

M€ Research  
budget

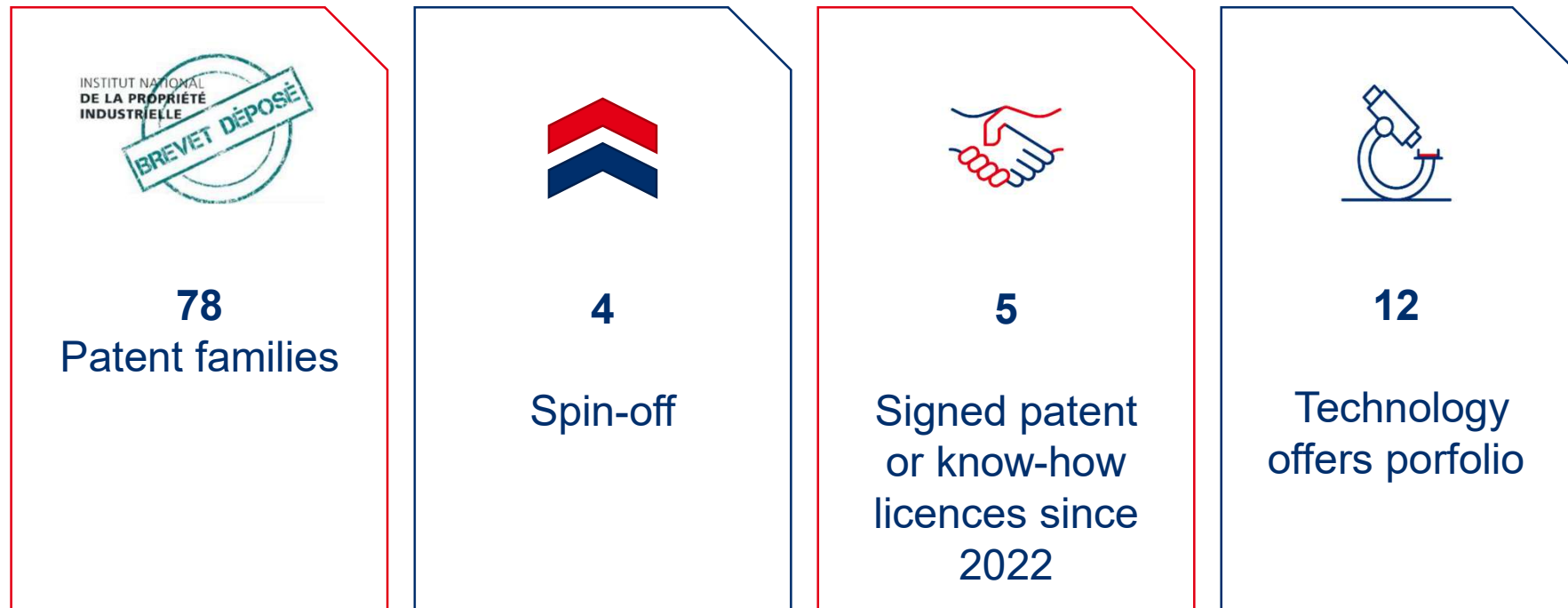


**4**

LabEX

# EFS TECH TRANSFER DEPARTMENT - FIGURES

**As of 2026**



# EFS TECHNOLOGY TRANSFER OPPORTUNITIES

## THERAPEUTICS

- Antibody-drug conjugate for the treatment of venous thromboembolism
- Targeting HSC for treating hemoglobinopathies
- Tailored therapeutic B lineage cells to treat immunodeficiencies
- HDL as a therapy and companion diagnostic for acute GVHD and CRS

## BIOTECHNOLOGIES

- Injectable solution for stem cells preservation
- Multiple Myeloma model from patient-derived bone marrow organoid
- Bone marrow organoid
- Method for the production of human brown and beige adipocytes

## DIAGNOSTIC

- Central Thrombocytopenia diagnosis through young platelet detection
- Diagnostic test for platelet activation detection

## DEVICES & EQUIPMENTS

- Device for homogenous and 96-well format DNA sample fragmentation through ultrasonic waves
- Devices for platelet release based on turbulent flow

# CONTACTS

## RESEARCH, INTELLECTUAL PROPERTY & TECHNOLOGY TRANSFER DEPARTMENT

Établissement français du sang

20 avenue du Stade de France

93218 LA PLAINE SAINT-DENIS Cedex FRANCE

### Jeanne AUTHIA-GAUBERT

Head of the Tech Transfer Office



E-mail : [jeanne.authia-gaubert@efs.sante.fr](mailto:jeanne.authia-gaubert@efs.sante.fr)

Tel. : +33 1 55 93 28 35

### Fabienne BILLIARD

Business Developer & Licensing Officer



E-mail : [fabienne.billiard@efs.sante.fr](mailto:fabienne.billiard@efs.sante.fr)

Tel. : +33 1 55 93 34 30

### Joël VEIGA

Business Developer & Licensing Officer



E-mail : [joel.veiga@efs.sante.fr](mailto:joel.veiga@efs.sante.fr)

Tel. : +33 6 69 70 12 27